

interact

Connected lighting – Office Industry

Wiwi Wijayati

Wiwi.Wijayati@signify.com

interact

Light that connect



Interact Office Industry

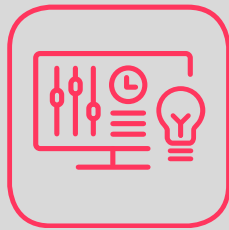
What can it do?

Interact extends the value of the connected lighting installed in your office, factory or warehouse.

By gathering data via IoT-ready sensors embedded in the lighting grid, it gives you new insights that help you make informed decisions about your day-to-day business operation. At the same time, you can centralize your lighting management, helping you to reduce operational costs, ensure compliance and plan maintenance.

With Interact Industry, you can start to build a smarter office and industrial enterprise.

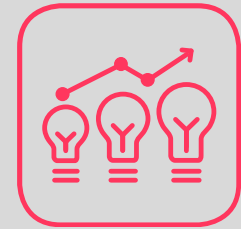
We do this through:



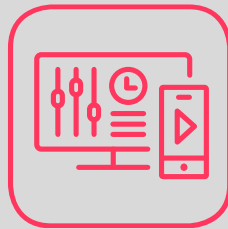
Lighting
management



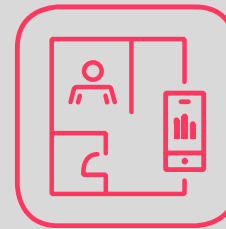
Lighting asset
management



Energy
optimization



Scene
management



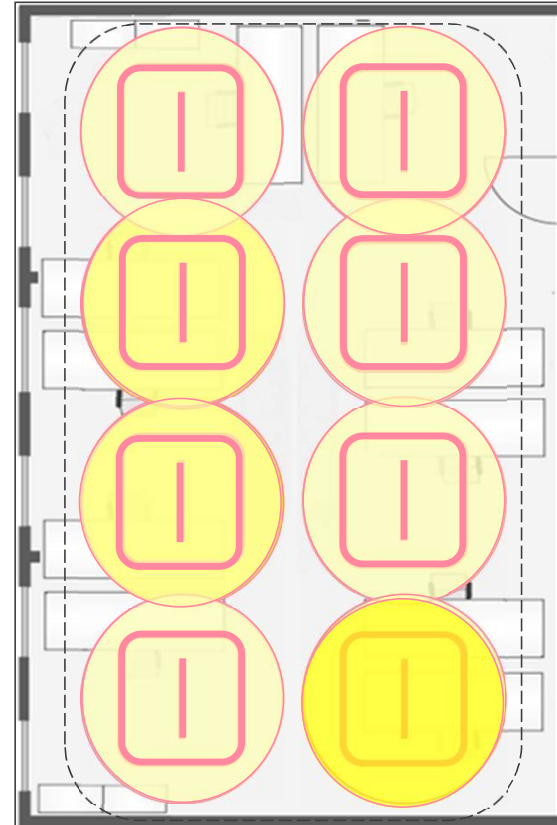
Space
management

interact

Unique Features

Granular dimming

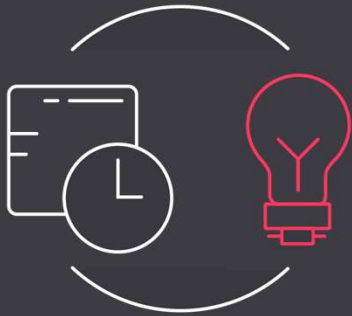
- Every luminaire gets an integrated sensor – occupancy, daylight & IR sensing
- Upon entering the Interact Pro Foundation luminaires detect movement and the luminaires turn on at a background level.
- As occupants settle down lights dim up to task level (determined by the daylight sensor and the wattage trim level).
- As workers move away, their lights dim down to the background level.
- When the group is entirely empty lights turn off.



Interact Office

interact

Where the money goes: average office expenditure



1%

for energy



9%

for rent

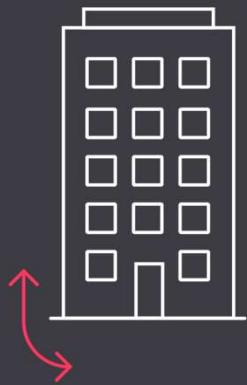


90%

for employees

WGBC - Health, Wellbeing & Productivity in Offices, September 2014

Understanding the challenges of the modern office



<50%

of space is
utilized in many
office buildings



€12,400

Average annual
cost per desk
in Paris
(approx. \$14,450)



70%

of people take 15
minutes to find available
space to meet



20-50%

of meeting rooms booked
out are not being used
at any one time

Interact Industry

interact

A new dawn for manufacturing and warehousing



Continuing focus
on sustainability



Accelerating adoption
of Industrial IoT principles



Increasing interest in staff
comfort and well-being

interact

Interact Building Manager Software Applications

Light Projects

Landing Home Page

- Provides access to all the assigned projects, Sites and buildings

The screenshot displays the 'LightProjects' landing page. At the top, there is a navigation bar with a hamburger menu icon on the left, the title 'LightProjects' in the center, and the user profile 'M. Rafi Administrator' on the right. Below the navigation bar is a grid of 21 project cards, arranged in three rows and seven columns. Each card represents a project and contains the following information:

- Project name (e.g., 'Schneider Electric ...', 'Schweikert GmbH', 'Selp GP Sud - FR...', 'Shrey Electro Sale...', 'Signify', 'Signify 9B Gurgao...', 'Signify Belgrade', 'Signify Czech Rep...', 'Signify Developer ...', 'Signify Innovation ...', 'Signify Innovation ...', 'Signify Real Estate', 'Signify Sweden', 'Signify UKI', 'Signify_Hamburg ...', 'Singtel', 'Skarpe AS', 'SOLA', 'Sonepar', 'SONEPAR PERU', 'SPIE ICS AG')
- A large number representing the count of sites or buildings (e.g., 1, 2, 36, 17, 3)
- The text 'Go to sites' below the number
- A 'Show apps' button at the bottom of each card

Project Name	Count	Action
Schneider Electric ...	1	Go to sites
Schweikert GmbH	2	Go to sites
Selp GP Sud - FR...	1	Go to sites
Shrey Electro Sale...	1	Go to sites
Signify	36	Go to sites
Signify 9B Gurgao...	1	Go to sites
Signify Belgrade	1	Go to sites
Signify Czech Rep...	1	Go to sites
Signify Developer ...	2	Go to sites
Signify Innovation ...	1	Go to sites
Signify Innovation ...	0	Go to sites
Signify Real Estate	17	Go to sites
Signify Sweden	1	Go to sites
Signify UKI	1	Go to sites
Signify_Hamburg ...	2	Go to sites
Singtel	1	Go to sites
Skarpe AS	1	Go to sites
SOLA	3	Go to sites
Sonepar	1	Go to sites
SONEPAR PERU	1	Go to sites
SPIE ICS AG	1	Go to sites

Light Control

Light Control to central override
Lights

At Floor Level

List View at Area Level

Floor plan View at Area level

interact Control Scheduler

Light Control mohamed.rafi@signify.com Administrator

UOB Plaza 1 > Floors

Floor	Floor plan		
-6	BASEMENT 3-PART 2	Auto	<input type="range"/> <input checked="" type="checkbox"/>
-5	BASEMENT 3-PART 1	Auto	<input type="range"/> <input checked="" type="checkbox"/>
-4	BASEMENT 2-PART 2	! Central override	<input type="range"/> <input checked="" type="checkbox"/>
-3	BASEMENT 2-PART 1	Auto	<input type="range"/> <input checked="" type="checkbox"/>
-2	BASEMENT 1-PART 2	Auto	<input type="range"/> <input checked="" type="checkbox"/>
-1	BASEMENT 1-PART 1	! Central override	<input type="range"/> <input checked="" type="checkbox"/>
3	LEVEL 3	Auto	<input type="range"/> <input checked="" type="checkbox"/>
5	LEVEL 5 PODIUM	Auto Central override Manual override	<input type="range"/> <input checked="" type="checkbox"/>
5	LEVEL 5	Auto	<input type="range"/> <input checked="" type="checkbox"/>

Light Control

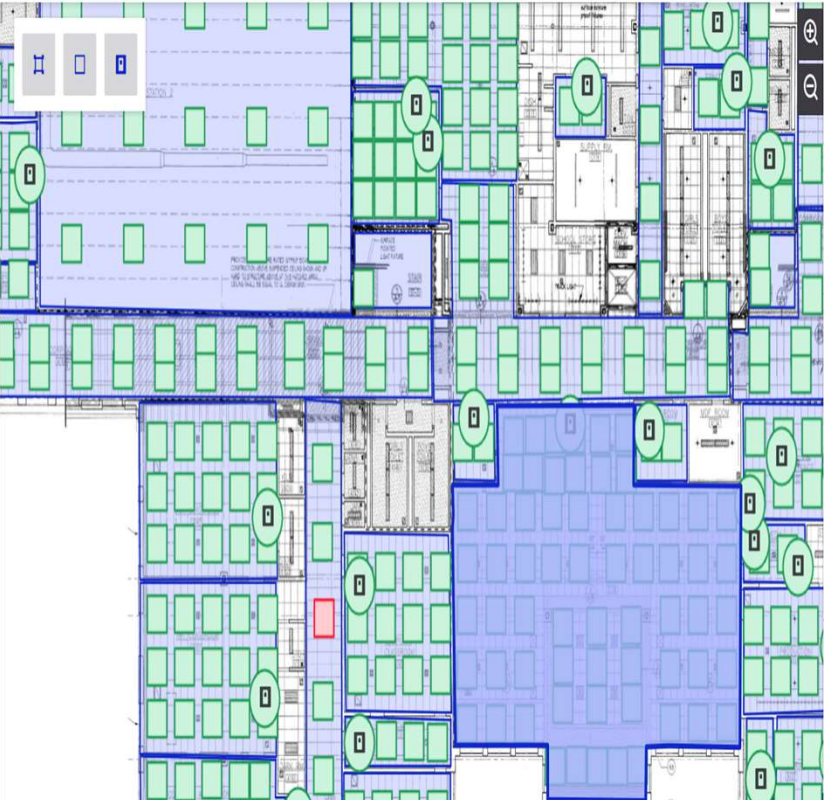
interact Control Scheduler Light Control mohamed.rafi@signify.com Administrator

↑ Campbell High School > Floors > 2nd Show floor plan

Areas	Control	Toggle
Office	Auto	<input checked="" type="checkbox"/>
Stair	Auto Central override Manual override	<input checked="" type="checkbox"/>
Stair	2 1 Auto	<input checked="" type="checkbox"/>
Corridor	Auto	<input checked="" type="checkbox"/>
Classroom	Auto	<input checked="" type="checkbox"/>
Classroom	Auto	<input checked="" type="checkbox"/>
Classroom	Auto	<input checked="" type="checkbox"/>
Classroom	Auto	<input checked="" type="checkbox"/>

interact Control Scheduler Light Control mohamed.rafi@signify.com Administrator

↑ Campbell High School > Floors > 1st Show area list



Library / Media Center
Area Auto On Auto Off

- Customize light behavior
- Redeploy area

Auto
Central override
Manual override
2
1
Auto

Install Base Inventory

- Generate Install inventory/ Project BoQ with one click for complete Building
- Handover Document

model. model Name	model.mod elType	position.point	product.description	product.fixtures	product.hasIntegratedSensor	product.name	product.standa loneEmergenc y
1st	Floor	POINT (42.82554874825506 -71.44523295983097)	SNH210 with 1 fixture	1	TRUE	SNH210 1	No
1st	Floor	POINT (42.82544018127519 -71.44521810357573)	SNH210 with 1 fixture	1	TRUE	SNH210 1	No
1st	Floor	POINT (42.82554598964155 -71.44529211706626)	SNH210 with 1 fixture	1	TRUE	SNH210 1	No
1st	Floor	POINT (42.82548894753326 -71.44534384617391)	SNH210 with 1 fixture	1	TRUE	SNH210 1	No
1st	Floor	POINT (42.82561130757828 -71.44506291625272)	SNH210 with 1 fixture	1	TRUE	SNH210 1	No
1st	Floor	POINT (42.825497223381056 -71.44516637446806)	SNH210 with 1 fixture	1	TRUE	SNH210 1	No
1st	Floor	POINT (42.8255570240956 -71.4450554881251)	SNH210 with 1 fixture	1	TRUE	SNH210 1	No
1st	Floor	POINT (42.82544293989354 -71.44515894634044)	SNH210 with 1 fixture	1	TRUE	SNH210 1	No
1st	Floor	POINT (42.825603031745 -71.44524038795859)	SNH210 with 1 fixture	1	TRUE	SNH210 1	No
1st	Floor	POINT (42.825543231028036 -71.44535127430154)	SNH210 with 1 fixture	1	TRUE	SNH210 1	No
1st	Floor	POINT (42.82555426548209 -71.44511464536039)	SNH210 with 1 fixture	1	TRUE	SNH210 1	No
1st	Floor	POINT (42.82544845713025 -71.44504063186987)	SNH210 with 1 fixture	1	TRUE	SNH210 1	No
1st	Floor	POINT (42.8256002731339 -71.44529954519388)	SNH210 with 1 fixture	1	TRUE	SNH210 1	No
1st	Floor	POINT (42.82566283245228 -71.44512950161563)	SNH210 with 1 fixture	1	TRUE	SNH210 1	No
1st	Floor	POINT(42.8253514136519 -71.44525496516898)	Battery-powered Zigbee Green Power Switch and Dim with 4 buttons			SWS200 BAT Switch Dim 4B	
1st	Floor	POINT(42.82486515208345 -71.44562064471936)	Battery-powered Zigbee Green Power Switch and Dim with 4 buttons			SWS200 BAT Switch Dim 4B	
1st	Floor	POINT(42.825004515210594 -71.44544222071637)	Battery-powered Zigbee Green Power Switch and Dim with 4 buttons			SWS200 BAT Switch Dim 4B	
1st	Floor	POINT(42.82504864067343 -71.4454164525979)	Battery-powered Zigbee Green Power Switch and Dim with 4 buttons			SWS200 BAT Switch Dim 4B	
1st	Floor	POINT(42.825778662204044 -71.44531447899425)	Battery-powered Zigbee Green Power Switch and Dim with 4 buttons			SWS200 BAT Switch Dim 4B	
1st	Floor	POINT(42.82575661911076 -71.44529210973681)	Battery-powered Zigbee Green Power Switch and Dim with 4 buttons			SWS200 BAT Switch Dim 4B	
1st	Floor	POINT(42.82504428520946 -71.44530533160129)	SNS210 with 1 fixture	1	TRUE	SNS210 1	No
1st	Floor	POINT(42.8250462432394 -71.4452877113358)	SNS210 with 1 fixture	1	TRUE	SNS210 1	No
1st	Floor	POINT(42.82533481646098 -71.4458677104913)	SNS210 with 1 fixture	1	TRUE	SNS210 1	No



**Meet Interact Office Industry:
the cost-efficient, easy-to-use
connected lighting system**

interact



Lighting management



With Interact Industry Lighting management software, you can take complete control of your lighting in a single warehouse or factory, or across your entire supply chain – from anywhere, at any time.

An intuitive dashboard gives you insight into lighting usage and allows you to optimize lighting operations remotely.



interact



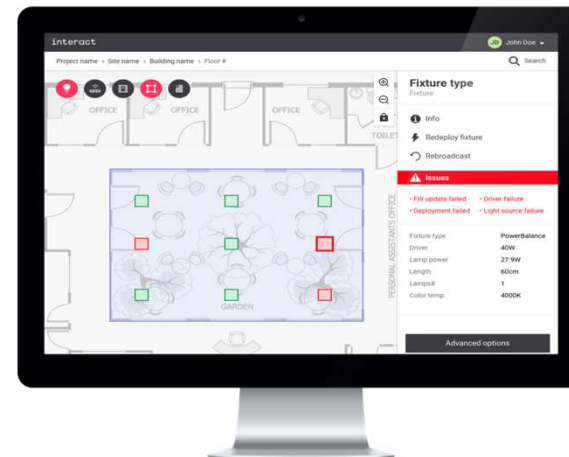
Lighting asset management



Good quality, reliable lighting is essential for continuous operations and safety in industrial facilities.

In combination with a managed service contract, Interact Industry Lighting asset management allows remote monitoring and management of your lighting performance in one or more facilities, regardless of location.

A remote diagnostics dashboard alerts us to faults and outages for immediate response. We can perform predictive maintenance based on real-time performance data, and automatically deploy firmware and software updates.



interact

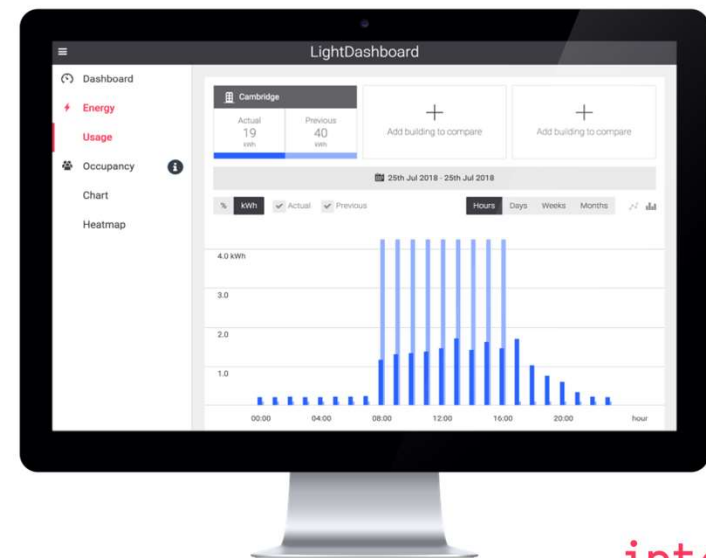


Energy optimization



Increasing energy efficiency is a major challenge for anyone with warehousing or manufacturing facilities.

Interact Industry lets you monitor energy consumption across one or all your facilities. You can customize lighting behaviour supported by advanced sensing. This allows you to maximize energy savings without compromising safety in the workplace. This puts you in the best position to comply with regulatory standards and meet your sustainability goals.



interact

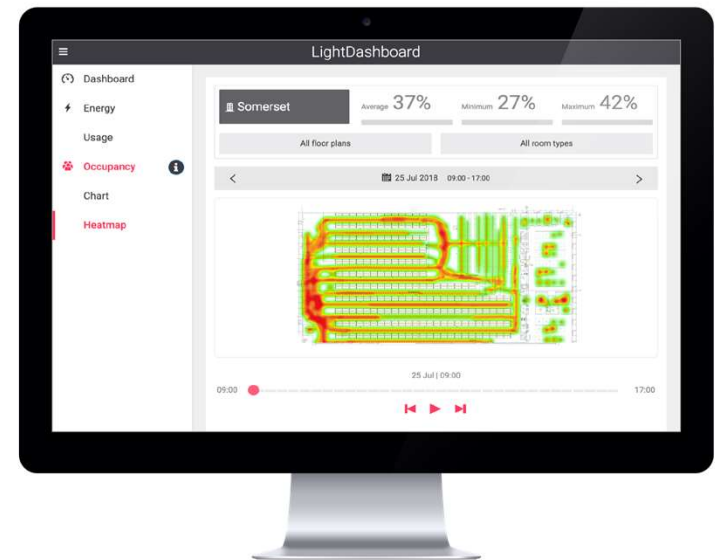


Space management



Streamline order picking and speed up delivery by optimizing your factory or warehouse layout.

Interact Industry Space Management gathers real-time data via sensors in the connected lighting to reveal precisely how areas are used, providing heatmap visualizations to guide inventory strategies and productivity improvements.



interact

Just imagine..



interact

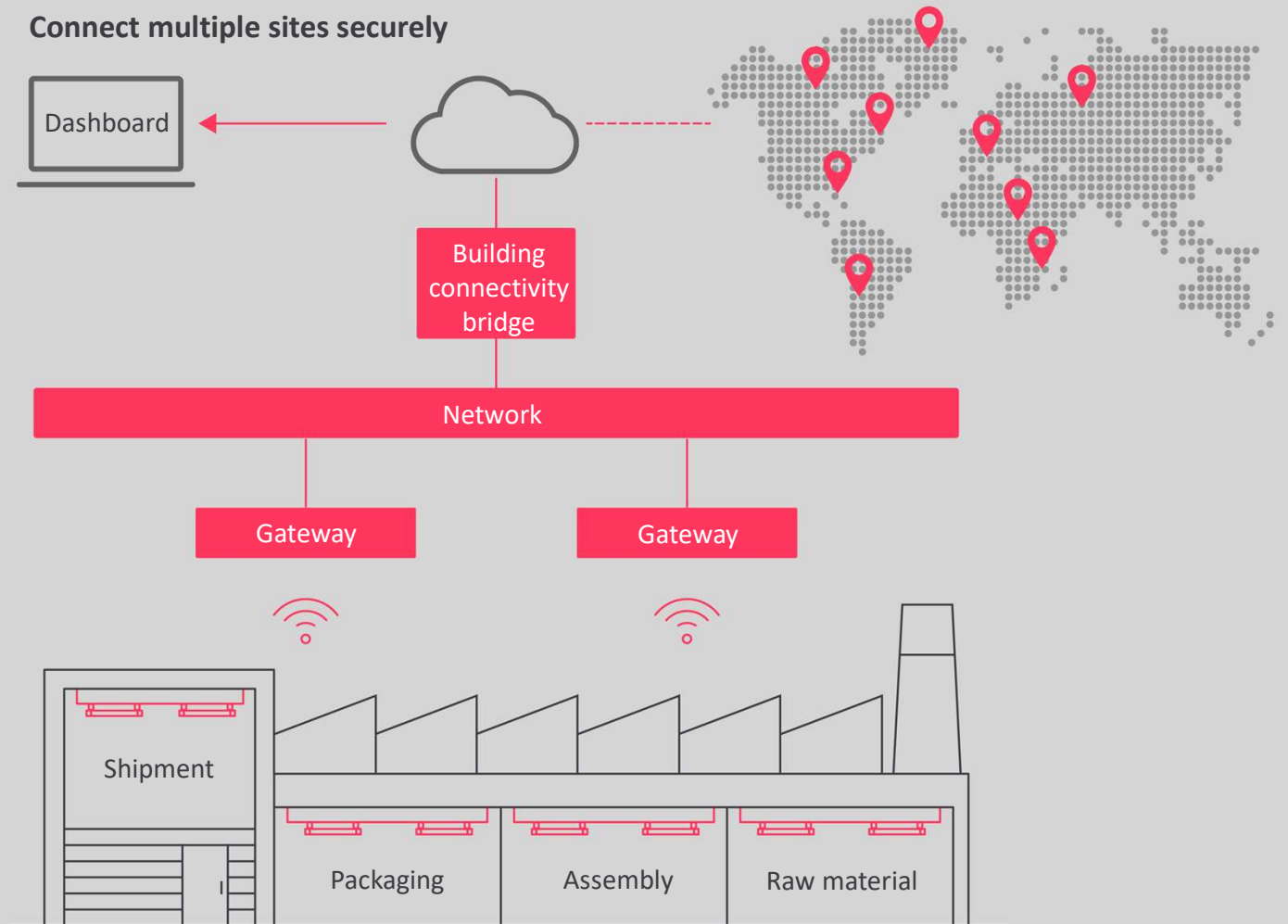
How does Interact Industry work?

interact

Interact Industry Wireless

- Lean and scalable on-site infrastructure
- Distributed lighting control close to the application
- Secured data flow to and from cloud-applications
- Suitable for single site, multi-site, new build and renovation

Connect multiple sites securely



interact

interact